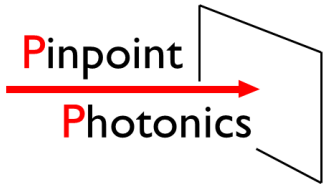


Integrated system of microscope stage and camera

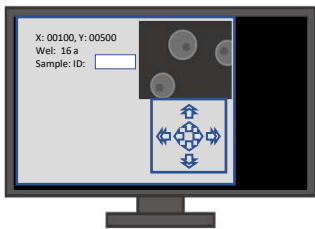


Pinpoint-cam USB

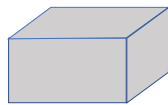
product#: PSC-USB-M** (monochrome), -C**(color)

Single GUI control system of XY stage and USB camera removes lost of positions during observation Informative image file name with wel position number and sample ID helps image data management.

Product items



Controller
(Control BOX +GUI software)



USB3 camera
imager size: 1/2" ~1"



Well plate mountable XY stage
Travel range X:110mm, Y:75mm

Feature 1: convenient functions by integration of XY stage and camera

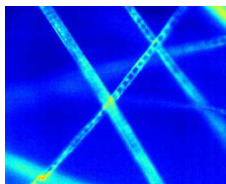
- Wel number is indicated on screen.
- Automatically, information of wel number and positions are added into file name of captured image.
- XY stage destination can be made by wel number input.

Feature 2: novel image processing functions are included

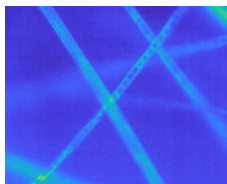
- Defect removal and median filter (3x3, 5x5, and 7x7) are included
- The following 5 color mapping are included for easy image recognition and image enhancing



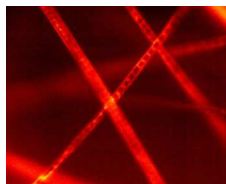
original image



jet



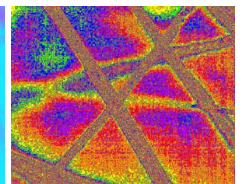
parula



hot



cool



prism

color mapping image

Feature 3: external trigger control function is equipped

- 2 TTL level signal output ports are equipped for external device control such as special illumination

Specifications

- Position settlement resolution: 0.8um
- Max stage moving speed: 5mm/sec
- Wel number function is available for 96 and 384 well plates
- Adaptable microscope: Olympus CKX53, IX-73, Novel NIB-100 (as of Feb. 2021)
- Sensor type: 1/2"~1.0" CMOS image sensor (monochrome or color), pixel size: 4.8um x 4.8um

A laser and imaging company located in Kanagawa, Japan

Pinpoint Photonics, Inc.

E-mail: koichiro.kishima@pinpointphotonics.com

