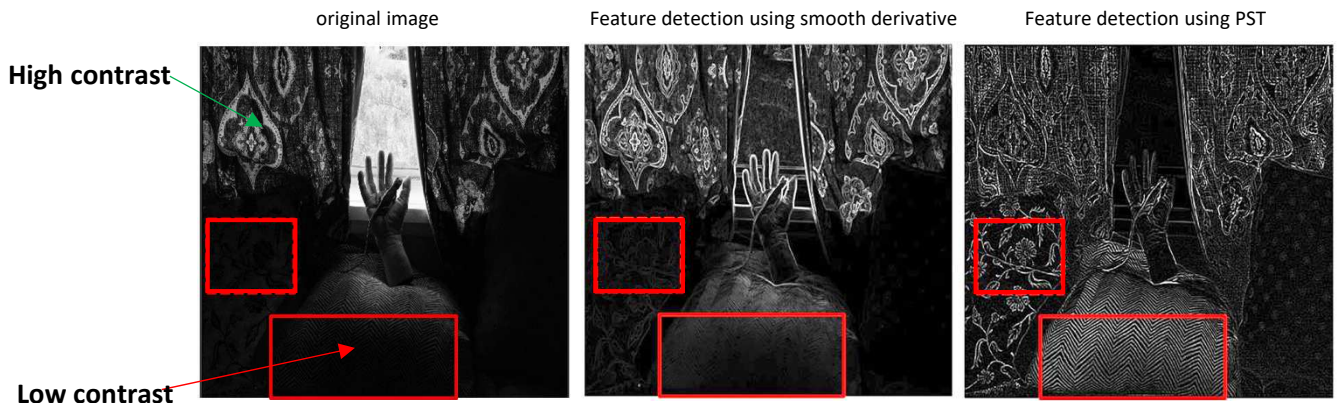


**Application hearing**  
Developed by UCLA Prof. Bahram Jalali laboratory

### Function 1. Edge / feature detection

Example (1)

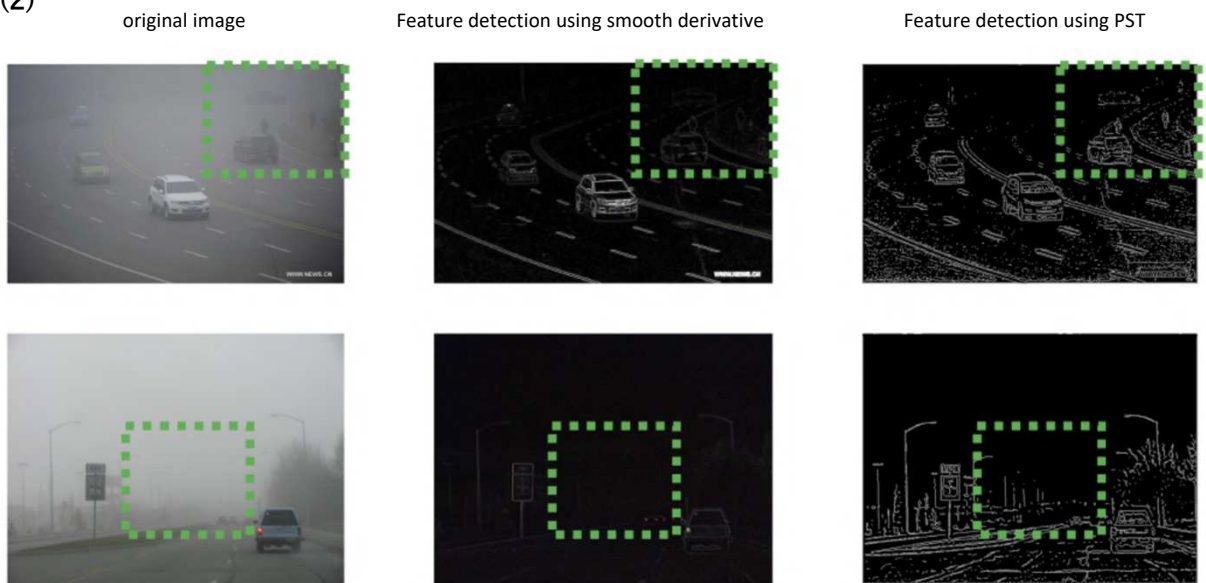


Despite brightness texture, feature, and boundary can be detected

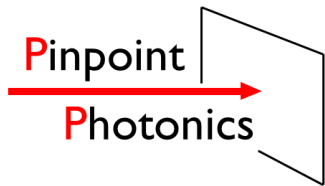
feature: easy cell recognition realizes reducing illumination light

→ easy observation of cells with toxic light or sensitive cells against light

Example (2)



# Image analysis and cell tracking software



# Dispersive PST

PST edge detection



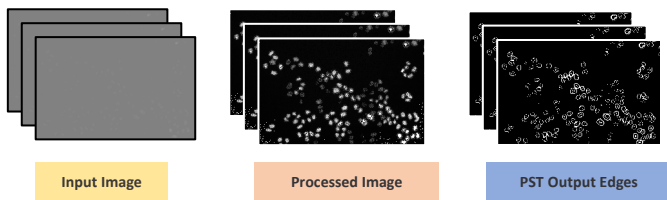
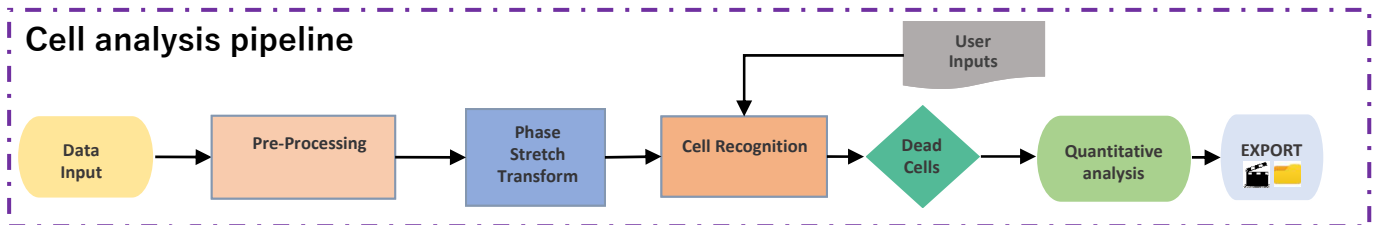
**Application hearing**  
Developed by UCLA Prof. Bahram Jalali laboratory

## Function 2. Cell Daughter Analysis

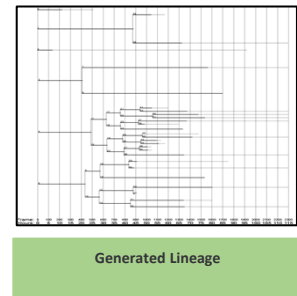
detection parameters

Morphology: Area, Intensity, Eccentricity (Major and Minor Axis), Velocity-X, Velocity-Y

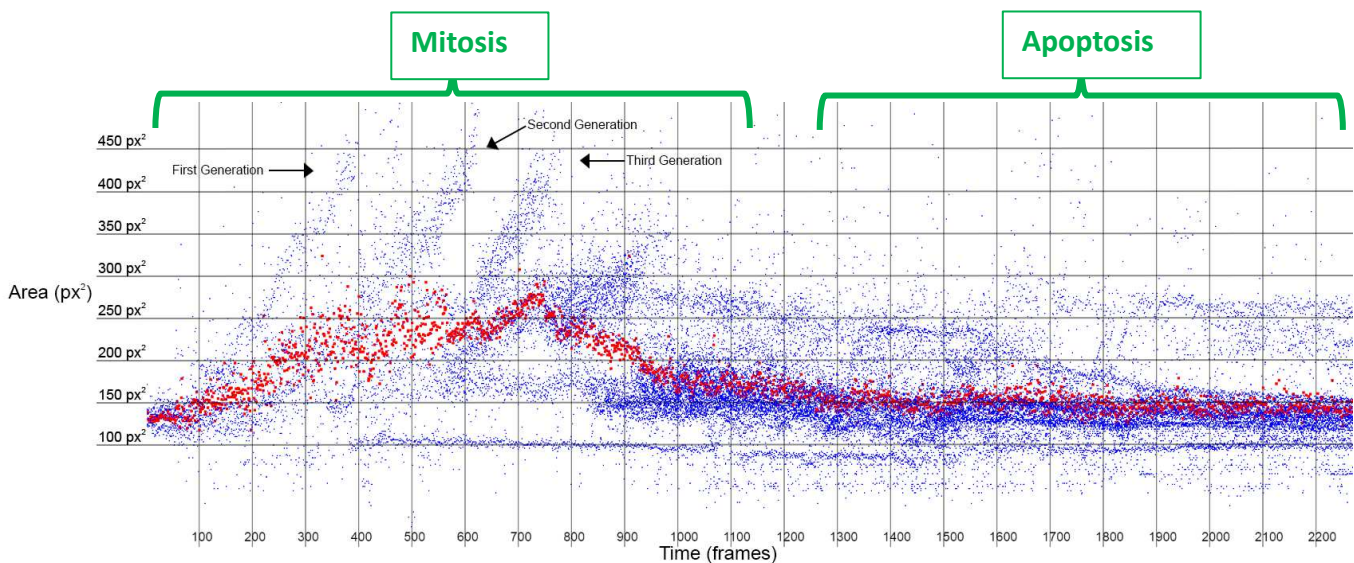
Tracking: Cell ID, Parent ID, Daughter ID, Center X, Center Y



Collaboration with Prof. Alexander Hoffmann, Signaling Systems Laboratory, UCLA



## Examples of Cell Parent Lifetime



A laser and imaging company located in Kanagawa, Japan

**Pinpoint Photonics, Inc.**

E-mail: koichiro.kishima@pinpointphotonics.com

